

**MYPT1 (Thr852) Antibody**  
**Purified Rabbit Polyclonal Antibody (Pab)**  
**Catalog # AP22226a****Specification**

---

**MYPT1 (Thr852) Antibody - Product Information**

Application	WB,E
Primary Accession	<a href="#">O14974</a>
Other Accession	<a href="#">O90623</a> , <a href="#">O6DRG7</a> , <a href="#">O9DBR7</a> , <a href="#">O10728</a>
Reactivity	Human, Mouse, Rat
Predicted	Chicken, Zebrafish
Host	Rabbit
Clonality	polyclonal
Isotype	Rabbit IgG
Calculated MW	115281

**MYPT1 (Thr852) Antibody - Additional Information****Gene ID** 4659**Other Names**

Protein phosphatase 1 regulatory subunit 12A, Myosin phosphatase-targeting subunit 1, Myosin phosphatase target subunit 1, Protein phosphatase myosin-binding subunit, PPP1R12A, MBS, MYPT1

**Target/Specificity**

This MYPT1 (Thr852) antibody is generated from a rabbit immunized with a KLH conjugated synthetic peptide between 824-857 amino acids from the human MYPT1.

**Dilution**

WB~~1:2000

E~~Use at an assay dependent concentration.

**Format**

Purified polyclonal antibody supplied in PBS with 0.09% (W/V) sodium azide. This antibody is purified through a protein A column, followed by peptide affinity purification.

**Storage**

Maintain refrigerated at 2-8°C for up to 2 weeks. For long term storage store at -20°C in small aliquots to prevent freeze-thaw cycles.

**Precautions**

MYPT1 (Thr852) Antibody is for research use only and not for use in diagnostic or therapeutic procedures.

**MYPT1 (Thr852) Antibody - Protein Information****Name** PPP1R12A ([HGNC:7618](#))

**Function** Key regulator of protein phosphatase 1C (PPP1C). Mediates binding to myosin. As part of the PPP1C complex, involved in dephosphorylation of PLK1. Capable of inhibiting HIF1AN-dependent suppression of HIF1A activity.

**Cellular Location**

Cytoplasm. Cytoplasm, cytoskeleton, stress fiber. Note=Also along actomyosin filaments

**Tissue Location**

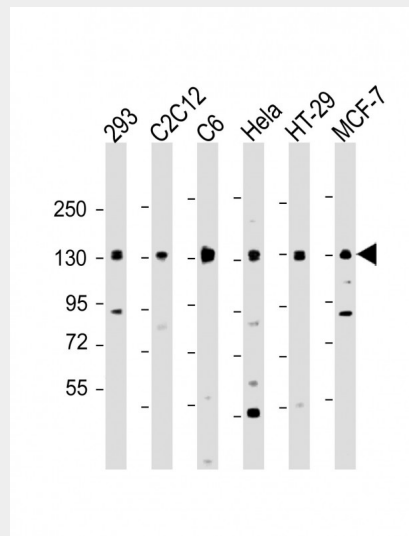
Expressed in striated muscles, specifically in type 2a fibers (at protein level).

**MYPT1 (Thr852) Antibody - Protocols**

Provided below are standard protocols that you may find useful for product applications.

- [Western Blot](#)
- [Blocking Peptides](#)
- [Dot Blot](#)
- [Immunohistochemistry](#)
- [Immunofluorescence](#)
- [Immunoprecipitation](#)
- [Flow Cytometry](#)
- [Cell Culture](#)

**MYPT1 (Thr852) Antibody - Images**



All lanes : Anti-MYPT1 Antibody at 1:2000 dilution Lane 1: 293 whole cell lysate Lane 2: C2C12 whole cell lysate Lane 3: C6 whole cell lysate Lane 4: HeLa whole cell lysate Lane 5: HT-29 whole cell lysate Lane 5: MCF-7 whole cell lysate Lysates/proteins at 20 µg per lane. Secondary Goat Anti-Rabbit IgG, (H+L), Peroxidase conjugated at 1/10000 dilution. Predicted band size : 115 kDa Blocking/Dilution buffer: 5% NFDM/TBST.

**MYPT1 (Thr852) Antibody - Background**

Key regulator of protein phosphatase 1C (PPP1C). Mediates binding to myosin. As part of the PPP1C complex, involved in dephosphorylation of PLK1. Capable of inhibiting HIF1AN- dependent suppression of HIF1A activity.

**MYPT1 (Thr852) Antibody - References**

Takahashi N., et al. Genomics 44:150-152(1997).

Guo J.H., et al. Submitted (DEC-2001) to the EMBL/GenBank/DDBJ databases.

Xia D., et al. Submitted (SEP-2003) to the EMBL/GenBank/DDBJ databases.

Ota T., et al. Nat. Genet. 36:40-45(2004).

Scherer S.E., et al. Nature 440:346-351(2006).